

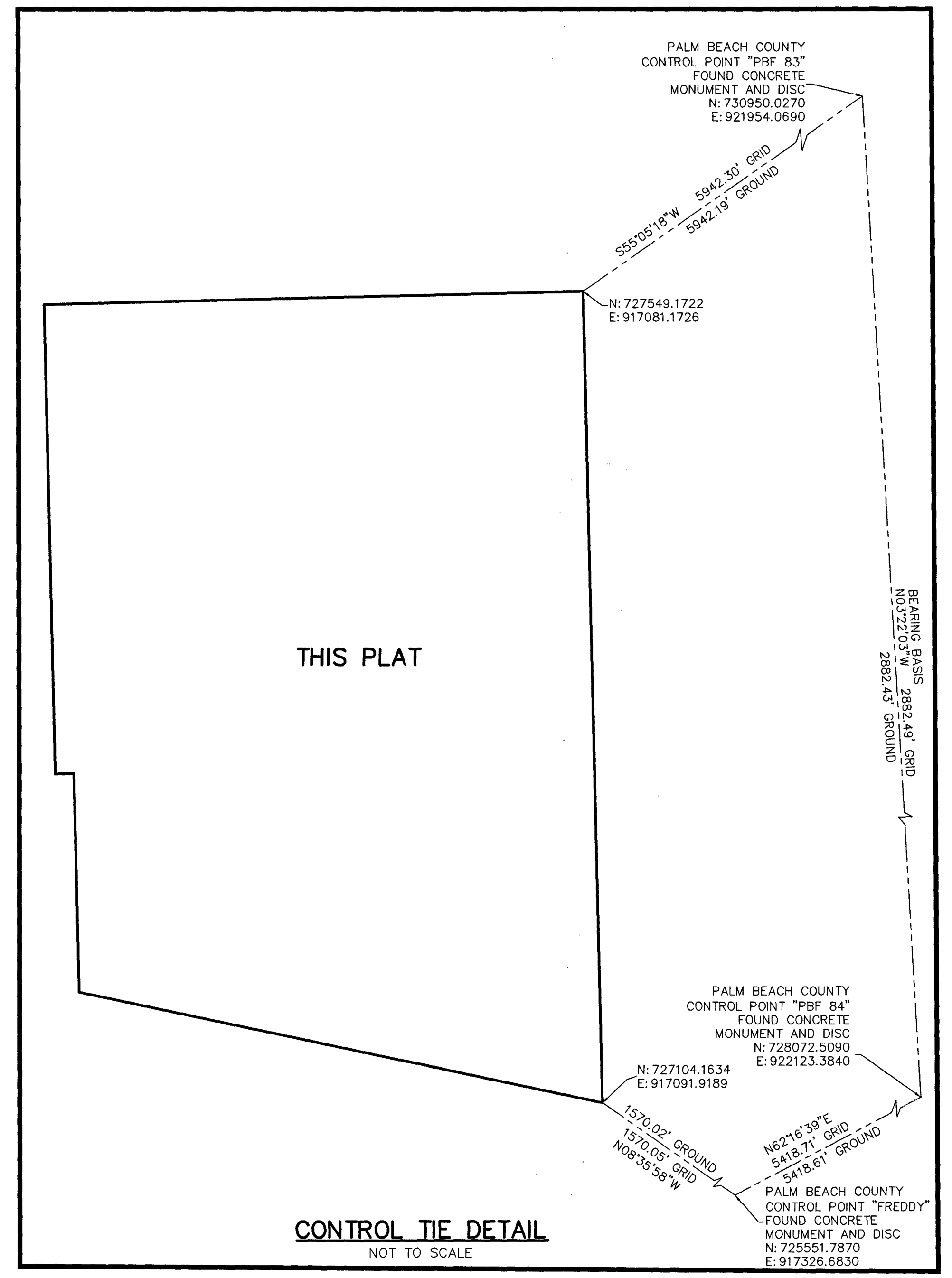
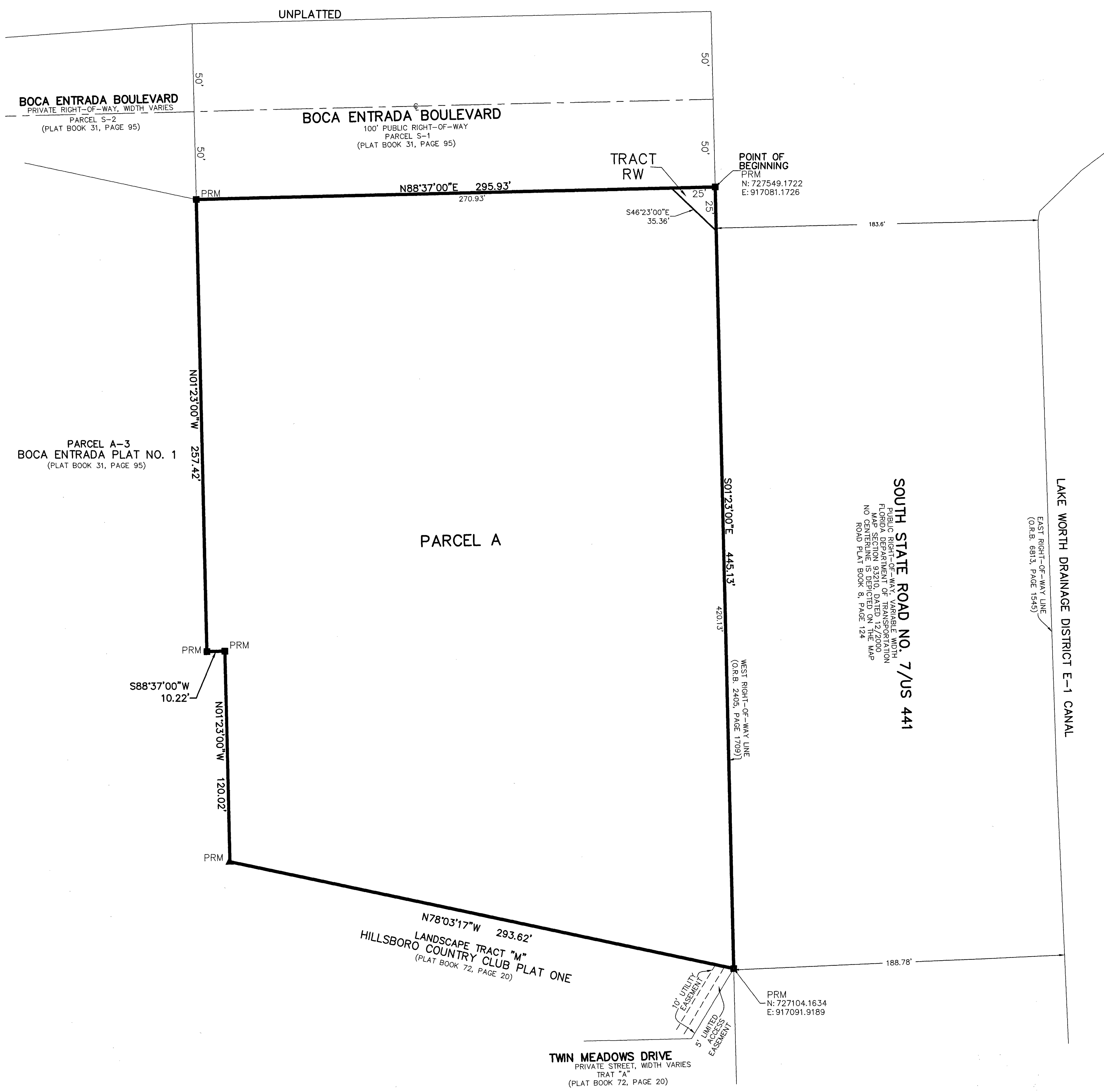
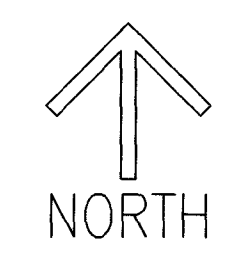
STATE ROAD 7 COMFE CHURCH

BEING A PORTION OF THE NORTHEAST ONE-QUARTER OF SECTION 36, TOWNSHIP 47 SOUTH, RANGE 41 EAST, PALM BEACH COUNTY, FLORIDA, LYING IN SECTION 36, TOWNSHIP 47 SOUTH, RANGE 41 EAST, PALM BEACH COUNTY, FLORIDA

THIS INSTRUMENT PREPARED BY
 DAVID P. LINDLEY
 OF
CAULFIELD and WHEELER, INC.
 SURVEYORS - ENGINEERS - PLANNERS
 7900 GLADES ROAD, SUITE 100
 BOCA RATON, FLORIDA 33434 - (561)392-1991
 CERTIFICATE OF AUTHORIZATION NO. LB3591

18

SHEET 2 OF 2



LEGEND/ABBREVIATIONS

- ⊖ - CENTERLINE
- Δ - DELTA (CENTRAL ANGLE)
- E - EASTING (WHEN USED WITH COORDINATES)
- N - NORTHING (WHEN USED WITH COORDINATES)
- O.R.B. - OFFICIAL RECORD BOOK
- PRM ■ - DENOTES SET PERMANENT REFERENCE MONUMENT 4" x 4" x 24" CONCRETE MONUMENT WITH ALUMINUM DISK STAMPED "C&W PRM LB#3591" UNLESS OTHERWISE NOTED
- ▲ - DENOTES SET PERMANENT REFERENCE MONUMENT NAIL AND DISC STAMPED "PRM" LB#3591

NOTES COORDINATES, BEARINGS AND DISTANCES

- COORDINATES SHOWN ARE GRID
- DATUM = NAD 83 (1990 ADJUSTMENT)
- ZONE = FLORIDA EAST
- LINEAR UNIT = US SURVEY FEET
- COORDINATE SYSTEM 1983 STATE PLANE TRANSVERSE MERCATOR PROJECTION
- ALL DISTANCES ARE GROUND UNLESS OTHERWISE NOTED
- SCALE FACTOR = 1.0000192
- GROUND DISTANCE X SCALE FACTOR = GRID DISTANCE
- BEARINGS AS SHOWN HEREON ARE GRID DATUM, NAD 83 (1990 ADJUSTMENT), FLORIDA EAST ZONE.